



## ADVENTURES IN LEARNING—Fall Session 2013

**REGISTRATION: \$60 if paid by Sept. 5th, \$65 after Sept. 5th.**

*Fees are nonrefundable. You may attend as many classes as you like in these eight weeks for one registration fee!*

**LUNCH FEE: \$8/week or \$60/eight weeks OR bring your own lunch and get a beverage & dessert for \$3. Lunch reservations need to be made in advance by Friday noon.**

~ 8:15—8:45 am ~

**Blood Pressure Check in the North Hallway**

*by Wichita Parish Nurse Ministry. Please allow enough time so everyone can get to class.*

Jette Mortensen, R.N., Parish Nurse  
Mary Rawcliffe, R.N., Retired

**Coffee and Conversation in the Lobby**

~ 9:00—10:00 am ~

### RELIGION

“Genesis: Our Cosmic Past”

Rev. Paul Reimers, Lutheran Pastor, ELCA, Retired

**Sep. 10** “Our Solar System’s Birth”

**Sep. 17** “Our Cooling Planet”

**Sep. 24** “The Garden of Eden”

**Oct. 1** “A Serpent Speaks & A Forbidden Tree: Temptation & Fall”

**Oct. 8** “Humans on Earth: Adam and Eve, Cain and Abel, Seth”

**Oct. 15** “The Generations of Adam: Humanity’s Journey through the Ages from Adam to Noah”

**Oct. 22** “A Boat Ride on an Ark: Noah and His Three Sons”

**Oct. 29** “The Tower of Babel: Reaching for Heaven”

### WICHITA MATTERS

**Sep. 10** “Rare Gems on the Bookshelf”

Bring a book for evaluation following the presentation.  
Kristian Strom, President, Lowest Cost Books

**Sep. 17** “Lord’s Diner’s Mission”

Jan Haberly, Executive Director, Lord’s Diner

**Sep. 24** “Evacuation of WW II English Children”

Jenny Davis, Occupational Therapist, Retired

**Oct. 1** “Shariah Law in the U.S.—A Beginner’s Understanding”

Tom Harmon, Sr. Pastor, Risen Savior Lutheran Church

**Oct. 8** “Are You Red Cross Ready?”

Beverly Morlan, Exec. Regional Director, American Red Cross

**Oct. 15** “Comfort for Kids in Crisis”

Beth Thummel, Volunteer Coordinator, Wichita Children’s Home

~ 9:00—10:00 am ~

**Oct. 22** “Weather Folklore: Fact or Fiction?”

Dick Elder, Meteorologist, National Weather Service, Retired

**Oct. 29** “Inside McConnell Air Force Base: Top Stories”

Public Relations Representative, McConnell Air Force Base

### TRAVEL

**Sep. 10** “The Yemen: Country in Change”

Nancy Marr, Educator, “Poor Houses” Historian, Tour Guide, House Restorer

**Sep. 17** “Train Travel from Seattle to Newton, KS”

Richard Hitchcock, Current LV Member

**Sep. 24** “Nigeria: The Country and the Culture”

Olabisi Pinheiro, Student, WSU

**Oct. 1** “Travel Experiences with Different Cultures”

Claude Puntel Sessions, Owner/President, Cross Cultural Assimilation Institute

**Oct. 8** “Cruise of the Mediterranean”

Ron Zimmerman, Air Force, Cessna, Retired  
Judy Zimmerman, Retired

**Oct. 15** “Haiti Water Projects”

Texie Randle, Teacher, Retired

**Oct. 22** “Egypt Trip: 2012”

Richard Caldwell, Teacher, Historian, Retired

**Oct. 29** “Cruise to Alaska: 2013”

Maylene Harder, Teacher, Retired

### SING!

**Sep. 10—Oct. 29** “Singing for Fun”

Glennye Reimers, Parish Choir Director, Reformation Lutheran Church

~ 9:00—11:15 am ~

### BRIDGE CONVENTIONS

**Sep. 10—Oct. 29** A class targeting bridge players who wish to learn basic conventions with an eye to playing duplicate contract bridge. Regular partners welcome. Limit: 8  
Alan Phares, American Contract Bridge Life Master

~ 10:15—11:15 am ~

## WHAT HAVE YOU READ LATELY?

- Sep. 10** “*The Genius of Dogs* by Brian Hare and Vanessa Woods”  
Frank White, Avid Reader, Traveler, Retired
- Sep. 17** “*Navigating Early*” by Clare Vanderpool  
Clare Vanderpool, Award-winning Kansas Author
- Sep. 24** “The Big Read: *True Grit* by Charles Portis”  
Racine Zackula, Librarian, Wichita Public Library
- Oct. 1** “Hottest Books for Fall”  
Shirley Wells, Bookseller, Watermark Books, Educator
- Oct. 8** “New Reads”  
Brad Purkey, Asst. Manager, Barnes & Noble
- Oct. 15** “*The Fairest One of All: The Making of Walt Disney’s Snow White and the Seven Dwarfs*”  
J.B. Kaufman, Author, Film Historian, Disney Foundation
- Oct. 22** “*Master of the Mountain, Thomas Jefferson and His Slaves* by Henry Wiencek”  
Katie Funk Wiebe, Author, English Professor Emeritus, Tabor College
- Oct. 29** “‘Coming to Terms’ & Other Poems”  
Emerson Wiens, Author, Professor of Industrial Technology, Retired

## HISTORY

- Sep. 10** “Wichita on Rails: A Look Back at the Railroads and Streetcar Lines”  
Jim Mason, Author, Naturalist, Great Plains Nature Center
- Sep. 17** “The Ku Klux Klan Comes to Cowley County, Kansas”  
Jerry L. Wallace, Historian, Researcher, Writer
- Sep. 24—Oct. 8** “Romanov Dynasty”  
Marcia Newton, Educator, Chief Financial Officer, Retired
- Oct. 15** “Songs of the American Civil War”  
Richard Caldwell, Teacher, Historian, Retired
- Oct. 22—Oct. 29** “Revolutionary Mothers”  
Ken Spurgeon, Teacher, Filmmaker, Historian

## HEALTH

- Sep. 10** “Virtual Dementia Tour” (Limit 15)  
Experience the feeling of dementia-induced confusion by using a unique, interactive tool kit, to better understand dementia behaviors.  
Holly Bellora, Marketing Director, Right at Home
- Sep. 17** “Shingles Vaccination”  
Hannah Lai, M.D., KS Physician Group
- Sep. 24** “DUI Victim Center of Kansas”  
Andrie Krahl, MBA, Exec. Director, DUI Victim Center
- Oct. 1** “Dementia”  
Gweneth Burbank, Care Coordinator, Always Best Care Senior Services of the Heartland

~ 10:15—11:15 am ~

- Oct. 8** “Arthritis and Related Diseases”  
Valerie Page, Program Director, Arthritis Foundation
- Oct. 15** “How to Navigate the Medicare Prescription Drug Website”  
Max Eberhart, Lawyer, SHICK Volunteer, Retired  
Fred Haag, Lawyer, SHICK Volunteer, Retired
- Oct. 22** “Essential Oils and Aromatherapy”  
Julie Sharp, Massage Therapist
- Oct. 29** “Emergency Medical Services Overview”  
Dave Johnston, Sedgwick Co. Emergency Medical Services

## EXERCISE

- Sep. 10—Oct. 1** (4 wks) “Light Exercise and Movement”  
Jill Rust, Speech and Language Pathologist, Fibromyalgia Sufferer

## POETRY

- Sep. 10—Oct. 29** “Learning More from the Laureates”  
Roy Beckemeyer, Poet

## THREADBARE READERS THEATRE

- Sep. 10—Oct. 29** Join a fun group rehearsing short skits and sketches for public presentations. No memorization is needed but good public reading/speaking is important.  
Ed Thompson, Drama Teacher, Minister, Retired

~ 11:30—12:25 LUNCHEON ~

~ 12:25—1:00 pm PROGRAM ~

- Sep. 10** “You Can Do Aerobic Dance”  
Jolene Burgess, Owner, Dance Instructor, Jackie’s Aerobics
- Sep. 17** “Legacy Ministries: Camps, House, and Gardenworks for At-risk Youth”  
Mimi Overholt, Musician, Teacher, Artist, Volunteer, Legacy Camp
- Sep. 24** “Home on the Range & Other Kansas History”  
Orin Friesen, Cowboy, Bass Player, Prairie Rose Rangers
- Oct. 1** “Kansas Aviation Museum Takes Flight”  
Lon Smith, Executive Director, KS Aviation Museum
- Oct. 8** “What Is the Assistance League of Wichita?”  
Kay Dunlap, Advocate, Assistance League of Wichita
- Oct. 15** “Threadbare Readers Theatre of LifeVentures”
- Oct. 22** “Melodears Sing”  
Edna Young, Director, Melodears
- Oct. 29** “State of the City”  
Carl Brewer, Mayor, Wichita

~ 1:15—2:15 pm ~

## RELIGION *(Repeat of Morning Session)*

**Sep. 10—Oct. 29** "Genesis: Our Cosmic Past"  
Rev. Paul Reimers, Lutheran Pastor, ELCA, Retired

## POTPOURRI

- Sep. 10** "Come Write with Us"  
Janet Bahl, Publicity Chair, Kansas Authors Club
- Sep. 17** "Christian Ministries to Offenders"  
Scott Davis, Chaplain, Christian Ministries to Offenders  
Tina Gilmore, Pastor, Christian Ministries to Offenders
- Sep. 24** "The Marion Historical Sanctuary"  
Nancy Marr, Educator, "Poor Houses" Historian, Tour Guide, House Restorer
- Oct. 1** "School Safety"  
Terri Moses, Exec. Director of Safety and Security, Wichita USD 259
- Oct. 8** "Life Story of a Star"  
Robert Henry, Program Manager, Lake Afton Public Observatory
- Oct. 15** "Civic Leadership"  
Thomas Stanley, Program Assoc., KS Leadership Center
- Oct. 22** "COMCARE of Sedgwick CO: Community Assessment Program for Seniors (CAPS)"  
Shantel Mitchell-Cooley, Sr. Social Worker, COMCARE
- Oct. 29** "Finding Agates, Crystals, Leaverites"  
Lyle Koerper, Representative, Wichita Gem and Mineral Society

## COMPUTER PROJECTS YOU CAN DO!

- Sep. 10** "Making a Flyer"
- Sep. 17** "Holiday Cards"
- Sep. 24** "Google It"
- Oct. 1** "Photos"  
Doris Cannon, Program Education Specialist, WSU, Retired

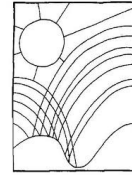
## VICTORIAN PRESENTATIONS

- Oct. 8** "Overview of the Underview"
- Oct. 15** "Captain's Lady and Adversities"
- Oct. 22** "Trinkets and Toys with Bits and Bobs"
- Oct. 29** "Captain's Lady's Victorian Christmas"  
Marti McCartney, Living History Interpreter/Presenter, Corsetiere and Seamstress

~ 1:15—3:00 pm ~

## ART STUDIO

**Sep. 10—Oct. 29** "Primarily Watercolor"  
This will be a "studio" class, with individual instruction for attendees on a painting of their choosing. Classes will include short lectures on composition and color theory. Sharon Leiker, Master Level Painter, KS Art Guild; Member, Wichita Women Artists



**Adventures in Learning  
Winter Session:  
Jan. 7—Feb. 25, 2014**

*Check this out!*  
↳ **Coming Up  
Next Session...**

*The 2013 Board of Directors (listed below) voted to try a new schedule for the Winter Session. By changing the class times, it is their hope to provide you with an even better array of class selections. Everyone will now have the opportunity to attend three classes in the morning. Luncheon moves slightly later and afternoon classes will still be offered. So join in and let's give it a try! We are happy to take suggestions in the office for Winter Session classes.*

*First class: 9 to 9:50 am  
Second class: 10 to 10:50 am  
Third class: 11 to 11:50 am  
Luncheon: Noon to 12:45 pm  
Luncheon Program: 12:45 to 1:20 pm  
Fourth class: 1:30 to 2:20 pm*

*Bd. of Directors: Max Eberhart, Pres.; Sara Jones, Vice Pres.; Duane Harms, Sec.; Dave Aldag; Enid Barnett; Marge Gilbertson; Fred Haag; Madgie Hinnners; Roger Mattingly; Judy Oliver; Gil Shockey; Ed Thompson; & Stacy Jansson.*

## Scholarships Available for FALL SESSION

LifeVentures has scholarships available for *Adventures in Learning* through the Bill & Shirley Naill Memorial Scholarship Fund. The purpose is to help individuals pay the registration fee —up to \$30 (or half the fee). Please contact Stacy Jansson to apply for one of these scholarships.



## "The Return of Charlie Chan In Graveyard Shift"

A Murder-Mystery-Comedy  
and Divine Dessert Buffet

Murder has never been this delicious!  
Expect nothing short of an evening filled with  
"spirited" high jinks when you combine the famed  
Chinese-Hawaiian detective Charlie Chan, a historic  
cemetery setting and the Midwestern Gypsy King as  
a most unlikely resident.

presented **Thursday, October 24th - 7 pm**  
Holy Cross Lutheran Church, 600 N. Greenwich

Tickets are \$15 and will be available in the LifeVentures  
office when our Fall Session begins. *Everyone is welcome!*

### LifeVentures Gift Certificates—NEW!

- A gift for a friend
- A fun birthday present
- To say "Thank You"

Buy a LifeVentures gift certificate—any amount  
is available. The certificate is good toward any-  
thing LifeVentures offers: *Adventures in Learning*,  
lunch, day trips, social events. Call the office  
(682-0504) for assistance.



## Welcome

*LifeVentures welcomes guests.*

*You may bring a friend*

*(first-time attendee only) to*

*classes one Tuesday with no fee. Lunch needs to be  
purchased, however. To make arrangements, please  
contact Stacy in the office at 682-0504.*

## MENU

*We offer a buffet-style hot lunch with entertainment.  
Lunch reservations need to be made by Friday noon.  
(If you are bringing your own lunch, please call to reserve a seat.)*

### September 10

Rosemary-Lemon Chicken  
Wild Rice Pilaf, Normandy Blend Vegetables  
Tossed Salad  
Chocolate Brownie

### September 17

Ham & Egg Casserole  
Steamed Broccoli  
Fresh Fruit Salad  
Cookie

### September 24

Orange-Ginger Chicken  
Israeli Couscous, Peas and Pearl Onions  
Caesar Salad, Dinner Roll  
Bread Pudding

### October 1

Chicken Fried Steak with Gravy  
Garlic Mashed Potatoes, Green Beans Almondine  
California Spring Mix, Wheat Roll  
Cookie

### October 8

Hamburger with Lettuce and Tomato  
Crunchy Tater Tots, Cole Slaw  
Cheesecake

### October 15

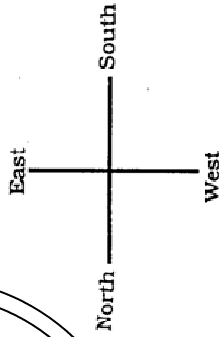
Apple-Sherry Pork Loin  
Orzo Pasta, Steamed Carrots  
Biscuits  
Strawberry Shortcake

### October 22

Taco Casserole  
Spanish Rice  
Tossed Salad, Corn Bread  
Lemon Cake

### October 29

Ham and Bean Soup, Chicken Noodle Soup  
Broccoli Salad, Whole Wheat Roll  
Chocolate Cake

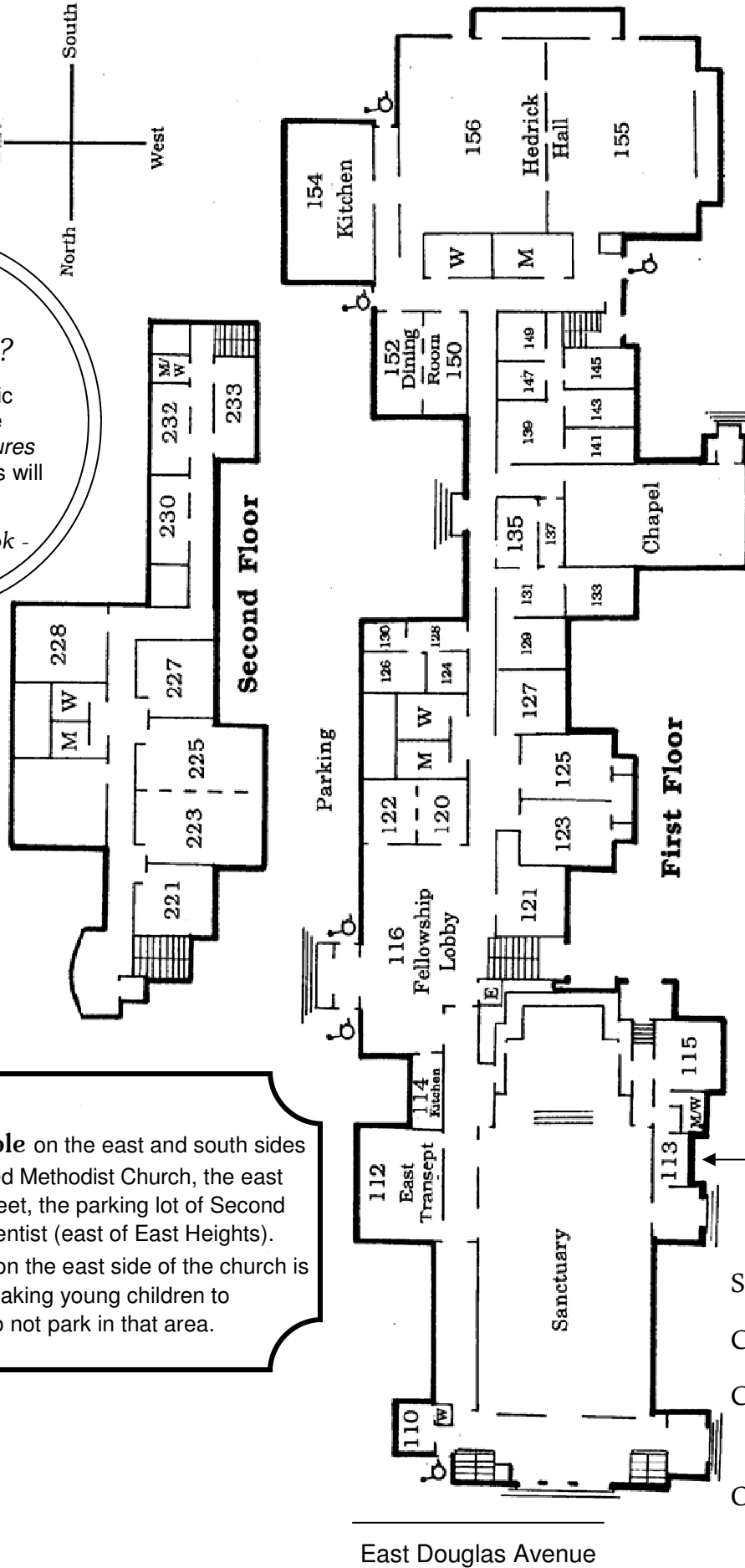


**Questionable Weather??**

If the Wichita Public School classes are cancelled, *Adventures in Learning* classes will be cancelled also.

- Check Facebook -

**Parking is available** on the east and south sides of East Heights United Methodist Church, the east side of Crestway Street, the parking lot of Second Church of Christ Scientist (east of East Heights).  
The "no parking" area on the east side of the church is reserved for people taking young children to preschool. Please do not park in that area.



LifeVentures Office  
 Stacy Jansson  
 Executive Director  
 Connilee Myers  
 Administrative Assistant  
 Carol Beverly  
*Adventures in Learning*  
 Assistant

Office Hours:  
 Mon-Fri 9 AM—3 PM

East Douglas Avenue

Color your life with new experiences



**LifeVentures**

Your place to keep knowing & growing

4407 East Douglas Wichita, KS 67218 682.0504

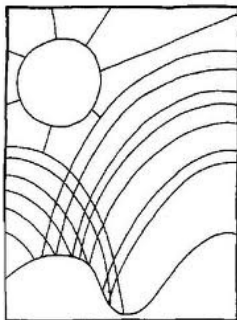
Return Postage Requested

Non-Profit Org.  
U.S. Postage Paid  
Wichita, KS  
Permit No. 293

## Adventures in Learning

Fall 2013 Schedule

September 10—  
October 29, 2013



*LifeVentures is a nonprofit, interfaith community of adults.*

*LifeVentures is a member of Shepherd's Centers of America.*

**Our Mission:** To provide educational and enrichment opportunities for adults in an interfaith environment

**Our Services:** *Adventures in Learning* (education/activities) and social outings

**Who does the work?** Volunteers and the office staff

**How is it financed?** By donations, memorials, fundraisers, grants and *Adventures in Learning* fees

**Where is it located?** East Heights United Methodist Church, 4407 East Douglas, Wichita, KS 67218

*We are blessed to have the support of these congregations:*

East Heights United Methodist ~ Hillside Christian ~ Holy Cross Lutheran ~ Lorraine Avenue Mennonite  
Grace Presbyterian ~ Temple Emanu-El ~ University Congregational ~ College Hill United Methodist  
University United Methodist ~ St. James Episcopal ~ First United Methodist ~ Plymouth Congregational

For more information, call the LifeVentures office at (316) 682-0504 Monday—Friday, 9 am to 3 pm

[www.LifeVenturesKS.com](http://www.LifeVenturesKS.com)



Like us on facebook